



Master Gardener Newsletter

New Mexico State University
Cooperative Extension Service
US Department of Agriculture
College of Agriculture & Home Economics

Dona Ana County Office
530 North Church Street
Las Cruces, NM 88001
Phone: (505) 525-6649 Fax: (505) 525-6652

Dona Ana County Master Gardener Graduation and Recertification Luncheon Dec. 13

This is the time of year when all your hard work pays off. Interns from the 2007 class who have worked their 50 hours, braved the hot line and come to meetings will be rewarded by graduating to official Master Gardener status. Members of the 2008 class who will have just completed their coursework will graduate to official Intern status to begin working their hours on the hotline and other Master Gardener projects. And the "old timers" who continue to work the hotline, the farmers market table and various community projects will receive recertification during the graduation ceremonies—the highlight of the luncheon program.

Our graduation/awards luncheon will be held Saturday, December 13, from 2 – 4 pm at the University Church of Christ gym, 1555 E. University. We decided to have a potluck this year, with the turkey and brisket & cake provided by the MG program. Your committee is working to finish up the final details and we need to know how many people plan to attend. **Please RSVP by Dec 8** to Barb Sallach at barbarasallach@comcast.net or call Barbara Arispe, 525-6649, and tell her how many will be in your party (spouses and family are welcome) and what you plan to bring (side dishes, breads, drinks, salads, etc.) Those of you that attended the last meeting and signed up to bring food still need to RSVP so that we know how many are in your party. This is an excellent way for this year's class to meet the other Master Gardeners, so we hope everyone is will attend. Volunteers to help decorate (starting at 1 pm) and to help clean up after-

Volume 9 Issue 12
December, 2008



International Master Gardener Conference

The 2009 International Master Gardener Conference will be held in Las Vegas, NV, March 22 – 29, 2009. Registration forms are available at <http://www.unce.unr.edu/imgc/> along with speakers, schedule of events, etc. The theme is "New Frontiers" in Horticulture and Gardening. The conference will address issues that gardeners everywhere face - water conservation, proper plant selection, soil enrichment, pest control - while also presenting new concepts in environmental stewardship and "green" technologies. Since what is old has become new again, we will also explore historical and traditional plants and methods.

Conference registration fee (which includes some meals) is \$310; rooms at the conference hotel begin at \$129/night. If you decide to attend, let Barb Sallach know so we can arrange transportation and hotel rooms as necessary.



Master Gardener Matters



Report on the Master Gardener Mtg. Nov 19, 2008

Linda Fredrickson reports that there are still several openings on the hotline for December so if you are available, please call Barbara Arispe at 525-6649. Remember that in December, January, and February the hotline is from 9 am – 12 noon instead of 9 am – 1 pm. Despite the the cold weather, the hot line has been busy. Working the hot line is a great way to meet other Master Gardeners and to learn new information, besides it's a lot more fun to work with someone else, so let's fill in those blanks. Ann Shine-Ring had an interesting question while working last month on how potentially radioactive tumbleweeds could affect an area nearby. A government contractor in Washington, DC called the hotline because a landfill at White Sands had not been sealed properly. Ann, with Barbara Arispe's help, contacted the New Mexico Dept. of Agriculture regarding appropriate herbicides for the tumbleweeds and other weeds/bushes on the landfill area and also contacted the weed specialist at NMSU, Dr. Ashigh. Dr. Ashigh gave Ann contact information on Dr. Durham, a researcher on rangeland management. It was interesting, but a lot for her to deal with alone, so please sign up soon so someone else doesn't have to work alone.

After hearing several complaints about the hot line, we decided that all of us needed a refresher course in hotline protocols and of course the 2009 interns need to be trained. So, our next meeting on January 21, 2009 will be devoted entirely to **hotline training**. Linda has agreed to oversee the training again this time, but she will also be training her replacement(s) since after five years she is ready to move on to other things.

Doug Brown reports that Conlee Elementary has reached the point where they had a **Garden Dedication Ceremony** so it is off to a flying start. They have decided to use a portable irrigation system with timers so they can get started immediately. They've also bought an indoor greenhouse to expand their garden efforts. Mesilla Elementary is

looking for a master gardener to work with them on design and other ideas for their garden so if you are interested, please email Doug, drphysic@juno.com.

Our **Farmer's Market booth** continues to be popular at the downtown mall. Currently we are working one Saturday per month. There are enough volunteers for December and January, Hurray! Since our Jan. meeting will be busy with hotline training, Barb will email you when the February date is known so you can volunteer.

Our **web page** has been updated by Jan Brydon and Sam Resch. It's located at

<http://cahe.nmsu.edu/county/donaana/mastergardener/index.html>. When you get a chance, take a look and contact either Jan, jbrydon@comcast.net, or Sam, samsandiresch@q.com, if you see anything that needs to be fixed. This is also where previous newsletters are posted. They would like to include pictures of master gardening activities and short announcements about our programs so please send them photos or any short blurbs for them to include.

The **educational programs committee** is looking for ideas for speakers for 2009 so send any suggestions to Colette Bullock, colettecb74@hotmail.com, or Janie Elliot, reagan2007@msn.com. If any of our new interns have garden skills they are willing to share, please contact Colette or Janie. Our program in November was by Buddy Viramontes. He gave an excellent talk on how pesticides are affected by local conditions, particularly water, and what you should do to make sure they are effective. For homeowners it probably boils down to "Use distilled water when mixing" and "Follow the directions carefully!" since the effectiveness of a pesticide is affected by the ph level of the water used to mix the pesticide and by how long the pesticide sits after mixing.

Dee Davis agreed to chair the committee that will

Continued from p. 2

put on another **Garden Expo at Enchanted Gardens in March**. Since our January meeting will be taken up with hotline training, please email Dee at deedavis2114@gmail.com if you are interested in participating. Our first one in September went very well and I know this one will be even more popular. Dee also did a presentation at the Mt. View Market on winter gardening recently. It went very well.

Jeff reports that the extension office has decided not to participate in the Mariachi Conference again as the ambience of the conference was not in sync with the extension office's educational format. Thanks to everyone who volunteered this year.

Tom Packard is looking for volunteers to assist the **Chihuahua Desert Native Park** with designing their native plant garden/display. If you are interested, please email him at tompack2002@yahoo.com.

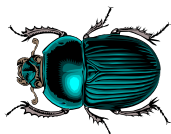
Joan Lane says the **Budget/Finance committee** will be meeting soon so if you have any suggestions on what our office needs or how else to spend our money, please contact her, mexlane@msn.com. She also said there was nothing currently to report on COCORAHS.

On December 9, **Integrated Pest Management (IPM)** will be the topic of the Western SARE Sustainable Ag conference. SARE, a program of the U.S. Department of Agriculture, advances farm and ranch systems that are profitable, environmentally sound and good for communities. Participating farmers may apply for Continuing Education (CEU) credits towards their resume in pesticide and certified crop areas. If you didn't already receive a brochure, contact Jeanine Castillo, rjeanine@nmsu.edu. (see article below)

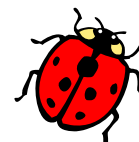
The **International Master Gardener Conference** will be held in Las Vegas, NV, March 22 – 29, 2009. Registration forms are available at <http://www.unce.unr.edu/imgc/> along with speakers, schedule of events, etc. If you decide to attend, contact Barb at bsallach@nmsu.edu so we can arrange transportation and hotel rooms as a group.

Frank Connor reports that the Farm and Ranch Museum will offer a **New Mexico History** class on Tuesdays from 1 – 4:30 pm starting Jan. 13 for \$35. Several members report that it is a very good series of classes and fills early so sign up soon if you are interested.

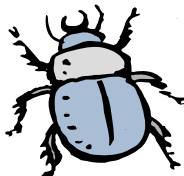
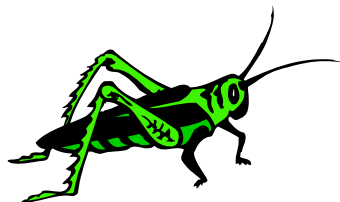
Hope to see you at our next meeting, January 21, 2009 at 9:00 am - Juliet and Barbara



Workshop on Integrated Pest Management to be held in Las Cruces



A SARE (Sustainable Agriculture Research & Education) sponsored workshop on Integrated Pest Management will be held on December 9 in Las Cruces. It will be held at the Best Western Mission Inn at 1765 South Main Street from 8:00 am to 5:00 pm. The cost is \$20.



Contact Mary Curtis at 646-1715 to register or contact Jeanine Castillo for more information (rjeanine@nmsu.edu) Workshops include: Cover Crops for Attracting Beneficials; Organic Producers Program;; Vegetable Crops IPM; Crop Rotation and How it Assists IPM; Who's on my Side, Insects to the Rescue; IPM for Pecan Orchards, and many more.

Many thanks to Ann Polarmo and Bonnie Eisenberg for baking the goodies we all enjoyed at the November meeting. There were several requests for the recipes used, and you can find those on page 5.



By Dixie La

Dixie's Honey Do's-December

Seasons Greetings to all and adios as this is my final installment.

Ornamentals

- Deadhead pansies and other cool season flowering plants.
- Begin pruning shrubs. Vigorous shrubs such as photinia and coto-neaster may be pruned by 30%. Evergreens are typically more temperamental so limit limb removal to 20%.
- Save evergreen cuttings for holiday decorations.
- Bring poinsettias into bright indirect light and keep them warm (above 65°F) and watered.
- According to Mary Irish, this is not a good time to plant any succulents outside.
- Consider a living holiday tree this year. Plant it in early January. "Christmas" type trees appropriate for our area include junipers, pines, deodar cedars, and arborvitae.
- Remove decorative wrap from holiday plants. Keep them away from heater vents.
- Begin transplanting materials that was root pruned with the fall.



Fruit, Nut, and Shade Trees

- Begin dormant season pruning. Make sure tree is truly dormant. [Make a small cut at the tip of a branch. If sap runs, then wait to prune until a cut weeps no sap. (MI).]
- Do not top trees.



- Begin planting hearty bare root trees as they become available at nurseries. Wait to plant cold tender species.
- Continue harvesting pecans.

Vegetables

- Plant Romaine, leaf, and head lettuce seed.
- Harden off lettuce transplants and plant later this month.



Lawns

- Continue regular management of cool season grasses but discontinue fertilization.
- Water dormant warm season species once or twice a month to a depth of 6 – 8 inches.

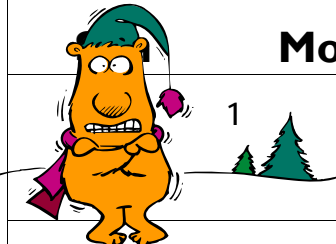

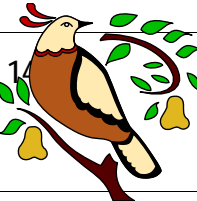





Miscellaneous

- Consider garden gifts for the holidays such as bulb planters, trowels, pruning equipment and gift cards.
- Remember to water established trees deeply at least once a month. Water newly planted material more often.
- Clean potting bench, garage, and shed.
- Reorganize tools.
- On pretty days work up garden beds.
- Plan landscape changes such as enlarging beds and reducing turf areas.
- Peruse garden catalogues, drink hot chocolate.



Hot Line Schedule - December 2008

	Mon	Tue	Wed	Thu	Fri	Sat	
	1 	2 Mary Thompson Open	3	4 MG Class	5 Alberta Morgan Open	6	
7	8	9 K. Sumpter Ina Goldberg	10	11 MG Class	12 Ann Shine Ring Joan Lang	13 Graduation Party 2-4 PM	
	14	15	16 Doug Brown Pam Crane	17	18	19 Linda Fredrickson	20
21	22 Hanukkah begins 	23 Pam Crane Open	24	25 Christmas 	26 closed for the Holiday	27 	
28	29	30 Open Open	31 New Year's Eve				

Pumpkin Bars

Crust:

1 box yellow cake mix
1 egg
1 stick butter, melted
¾ cup oatmeal (not instant)
Mix together and press into
bottom of greased 9 x 13 pyrex baking dish

filling:

1- 8 oz block of cream cheese
1 -15 oz can of pumpkin
3 eggs
1 ½ c. powdered sugar
1 stick melted butter – cooled to room temp
1 tsp vanilla
1 tsp cinnamon
Cream sugar and cream cheese using electric mixer
until smooth. Add melted butter and remaining
ingredients, mix until smooth then pour over crust.
Bake at 350 for 45-50 minutes until center is firm.
Cut into squares when cooled.



Zucchini Bread Recipe – Ann Palormo

Preheat oven to 350 degrees

Ingredients:

3 cups of flour
2 tsp. baking soda
½ tsp. baking powder
2 cups sugar
1 cup vegetable oil
¾ cup finely chopped pecans or walnuts
2 cups coarsely shredded, unpeeled, zucchini
1 8 oz. can crushed pineapple, well drained (except
I only partially drain the pineapple)

Sift dry ingredients and set aside. Beat eggs in
large mixer bowl, add sugar, oil and vanilla; beat
until creamy. Stir in pineapple, zucchini and nuts;
add dry ingredients, stirring only until moistened.

Bake in 2 well-greased and floured 9 x 5 x 3” loaf
pans (or use smaller pans if making this to give as
gifts). Bake for 40 – 50 minutes or until well done.
Baking time depends on the size of pans used.
Turn out on rack and cool completely.