

# Hopi Pumpkin - EP44

Native Seed SEARCH Gardener Network - Darrol Shillingburg - Grower - Las Cruces, New Mexico - 2005

Catalog No/Crop name EP44 - Hopi Pumpkin

Date of planting: June 23,200 Date transplanted into garden: NA  
Date of 1st germination: June 27,2005  
No. seeds planted: 20 No. seeds germinated (date): 9 (7/08/05)  
Did the crop receive full sun, partial sun, or full shade? Full sun  
Date to first male flower(s): 7/26/2005 Date to first female flower(s): 7/29/05  
Date first fruit produced: not recorded  
Date of harvest: mid August to early November  
Total number of fruit harvested? Not recorded for summer squash fruits. Fourteen mature winter storage fruits. Average weight of fruit? ½ lb - 3 lbs f or green (summer squash), 3 lb - 7lbs for mature winter squash  
Do you consider this a high, medium or low yielding plant? High yielding  
What color is the rind? Pale yellow green in young fruit, maturing to yellow in older fruit  
Stripes or splotches? If so, what color? Darker green in both young and mature fruit  
What color is the meat? Pale green in young fruit - to yellow in mature fruit Is it stringy? Not in young fruit, but quite stringy in mature fruit  
How does the fruit taste? Is it juicy, meaty, pithy, etc? Very young fruit have a sweet melon like flavor. Green mature fruit have a meaty sweet flavor when cooked properly. This is the best tasting and most versatile summer squash that I have grown - it has replaced all other summer squashes in the garden.  
Mature (winter fruit) have a very mild bland flavor and are best used in dishes that have other stronger flavored ingredients. The mature storage fruit holds very well in storage, but is very low in flavor and is stringy. I have found that using it as a pureed base for soups works best. It can also be baked and used in other dishes. Goes well with sweet corn, green chili and tomatoes.  
Did you notice pollinators among the flowers (bees, beetles, other insects - please list insect names if you know them): Honey bees are the most common, although they attract bumble bees, other smaller native bees, beetles and some ants.  
Were the plants subject to any unusual or particularly harsh weather (hail, hard rain, early frost or freezing etc.)? When? How did they fare? They went through two hard rain storms with no damage, although in previous years they have been shredded by hail stones and recovered.  
Were there any problems with disease, fungus, insects, or other pests? How did plants respond? Did you use anything to treat the problem? How well did it work?  
Squash bugs are a problem - but can be managed by using row covers until June and picking off squash bugs until end of July. They are generally not bothered by squash bugs later in the year. Powdery Mildew is also a problem - although the vines are able to outgrow it and continue producing - plant in rich soil beds where they get morning sun, good air circulation and use drip irrigation.

Seeded direct into the west side of a 4' x 16' bed in 4 clusters of 5 seeds each. Follows Ojito Peas and Red Necked Garlic in a no-till bed. No additional compost added before planting. Inter-planted in the bed with Anazasi Beans, Red Amaranth. Seed is saved from my 2004 harvest - originally from Native Seed SEARCH - 2004

Germination by cluster 4/5, 3/5, 1/5, 1/5. Seemed to me that the germination rate was lower this year than last - but the plants were more productive. The vines can get quite long (20 ft.) for a small space garden, but can be moved about and placed in pathways or on the edges of beds. Even though it takes more space than bush varieties, the taste is worth every inch of space it takes. Drip irrigation with 1/4 " buried soaker hoses - can also be hand watered when needed (June and sometimes in July before the monsoon rains begin.

Darrol Shillingburg  
Las Cruces, NM 88007  
2005 growing season



Seedlings - 7/01/05



HP Bed with Amaranth/Corn - 8/13/05



Fruit and Bloom - 8/02/05



New Fruit - 8/05/05

# Hopi Pumpkin - EP44

Native Seed SEARCH Gardener Network - Darrol Shillingburg - Grower - Las Cruces, New Mexico - 2005

## Additional Photographs - Hopi Pumpkin - EP44



Mature Winter Fruit - 10/23/05



Ideal Sized Fruit



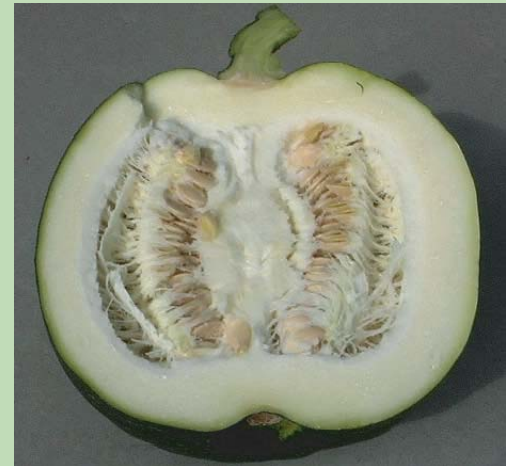
Mature Winter Fruit



Size Range - Green Fruit



Winter Storage Fruits - 10/23/05



Large Green Fruit



Winter Storage Fruits - 10/23/05



Powdery Mildew - 9/10/05



Measured Leaf